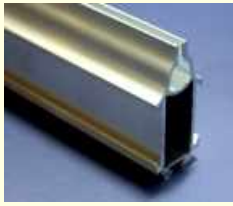




# ACE POWER BLINDS CO., LTD.

## COMPONENTS OF ROLLER SHADE BLINDS ROLLER BLINDS-Bottom Rails



RB-A4-P  
RB-A4-Z

New Alum. Bottom rail:  
Two side can Insert fabric  
slat , Heavytype ,  
Painted,  
Plated

20pcs/ctn, 5.8meter/pc



RB-A5

End cap,  
For Bottomrail RB-A4

5000pcs/ctn, 1000pcs/bag



RB-B4

Alum. Bottom rail ,  
One way open,  
Ripple type,  
Dia. 21mm  
Painted, Plated

20pcs/ctn, 5.8meter/pc



RB-B4G  
RB-B4G-Z

Alum. Bottom rail ,  
Glossy type,  
Dia. 21mm  
One way open,  
Painted, Plated

20pcs/ctn, 5.8meter/pc



RB-B5

End cap,  
For Bottom rail

6000pcs/ctn, 1000pcs/bag



RB-B4H  
RB-B4H-Z

NEW Alum. Bottom rail :  
Two way open,  
Heavy type,  
Painted, Plated

20pcs/ctn, 5.8meter/pc



RB-B5H  
RB-B5HJ

RB-B5H  
RB-B5HJ

End cap,  
For two way Bottom rail

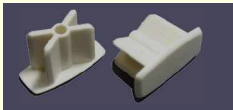
6000pcs/ctn, 1000pcs/bag  
3000pcs/ctn, 1000pcs/bag



RB-F4

Alum. Bottom rail ,  
Close and Flat type,  
Two way open,  
Painted, Plated

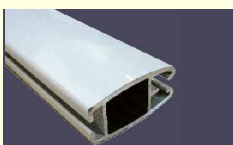
20pcs/ctn, 5.8meter/pc



RB-F5

End cap,  
For RB-F4 Bottom rail

5000pcs/ctn, 1000pcs/bag



RB-F4W

Alum. Bottom rail ,  
Close and Flat type,  
Two way open,  
Painted, Plated

20pcs/ctn, 5.8meter/pc



RB-F5W

End cap,  
For RB-F4W Bottom rail

5000pcs/ctn, 1000pcs/bag



RB-HG4  
-15X25

Alum. Bottom rail , egg  
form type, 15X25mm  
two way open, Double  
side can insert fabric,  
Painted, Plated

20pcs/ctn, 5.8meter/pc



RB-HG5

20X31mm End cap, egg  
form type, For Bottom rail  
RB-HG4-15X24

2000pcs/ctn, 1000pcs/bag



RB-T4

Alum. Bottom rail ,  
Triangular form type ,  
Two way open, Painted,  
Plated

20pcs/ctn, 5.8meter/pc



RB-T5

End cap, For Bottom rail  
RB-T4

5000pcs/ctn, 1000pcs/bag



RB-U4

Alum. Bottom rail ,  
Glossy type,  
Dia. 21.5mm  
One way open,  
Can use screw to fix,  
Painted, Plated

20pcs/ctn, 5.8meter/pc



RB-U5  
RB-U5S

21.5mm End cap,  
For Bottom rail RB-U4,  
Have screw hole,  
W/O screw 2.6X6mm

2000pcs/ctn, 1000pcs/bag



RB-V4-8X30

Alum. Bottom rail ,  
rectangular form type,  
8X30mm One way open,  
Can use Wire system,  
Painted, Plated

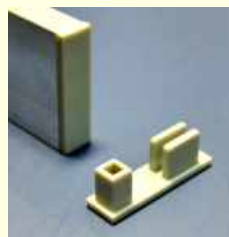
20pcs/ctn, 5.8meter/pc



RB-V5

10X32mm End cap,  
rectangular form type,  
( can make company's mark ),  
For Bottom rail RB-V4-8X30 ,  
Haven't Wire system hole

5000pcs/ctn, 1000pcs/bag



RB-V5E

8X30mm End cap,  
rectangular form type,  
For Bottom rail RB-V4-8X30 ,  
Level type

5000pcs/ctn, 1000pcs/bag



RB-V5W

8X30mm End cap,  
rectangular form type, For  
Bottom rail RB-V4-8X30 ,  
Have Wire system hole

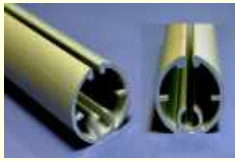
5000pcs/ctn, 1000pcs/bag



# ACE POWER BLINDS CO., LTD.

## COMPONENTS OF ROLLER SHADE BLINDS ROLLER BLINDS-Bottom Rails

CURTAIN Machine Remote Venetian 25/16mm Venetian Vertical Panel Roller Wire Roman



**RB-VG4-19X23**  
Alum. Bottom rail , egg form type, 19X23mm  
One way open, Painted, **Plated**  
20pcs/ctn, 5.8meter/pc



**RB-12-PDV**  
PLASTIC STOP BALL-RING ,  
Double V OPENTYPE For  
Dia. 4.5mm Ball chain  
10000pcs/ctn, 2500pcs/bag



**RB-VG5**  
19X23mm End cap, egg form type, For Bottom rail  
RB-VG4-19X23  
5000pcs/ctn, 1000pcs/bag



**RB-12-PC**  
PLASTIC STOP RING ,  
"V" TYPE  
For Dia. 4.5mm  
Ball chain  
20000pcs/ctn, 5000pcs/bag



**RB-WG5R  
RB-WG5L**  
17X30mm End cap, Right / Left side , egg form type,  
For Bottom rail  
RB-WG4-17X30  
2000pcs/ctn, 1000pcs/bag



**WB-06-4PC8.5**  
PC OPEN BEAD,  
Dia 8.5mm ,  
for Dia. 4.5mm  
Ball chain  
10000pcs/ctn, 1000pcs/bag



**RB-G5-15X25**  
15X25mm End cap, egg form type, For Bottom rail  
RB-G4-15X25  
2000pcs/ctn, 1000pcs/bag



**M30-14-MCT**  
Transparent Chain (Cord)  
Weight with/without  
Cylinder Metal total=30gw,  
Cylinder type , for  
operation chain or Cord  
200sets/ctn



**PET-S4  
PET-S5  
PET-S6  
PET-S7  
PET-S8  
PET-S9  
PET-S10**  
PET Soft Tape,  
wide:4-10mm for Fabric  
Insert into Alum. Rail,  
with/without adhesive tape,  
White , 0.35mmX4-10mm  
4800meter/ctn, 600meter/roll



**M30-14-MCE**  
Chain (Cord) Weight with  
Cylinder Metal  
total=34gw, Easy open  
type, Cylinder type , for  
operation chain or Cord  
200sets/ctn



**ABS-S6  
ABS-S7  
ABS-S8**  
ABS Soft Tape,  
wide: 6-8 mm  
for Fabric Insert into Alum.  
Rail , with/without adhesive  
tape , White  
6000meter/ctn, 1500meter/roll



**M30-14-MV**  
Chain (Cord) Weight with  
35gw Metal, Arc angle type,  
for operation chain or Cord  
100sets/ctn



**ARC-T3  
ARC-T3.5  
ARC-T4  
ARC-T5**  
Acrylic hard Tube ,  
Dia.: 3-5mm,  
Inside Empty  
400pcs/ctn, 3meter/pc



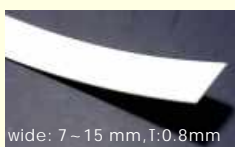
**M30-14-MVS**  
Chain (Cord) Weight  
with 35gw Metal, **Square**  
type, for operation chain  
or Cord  
100sets/ctn



**PE-T3  
PE-T4  
PE-T5**  
PE Soft Tube,  
Dia.: 3-5mm,  
For compact Alum. Tube  
and roll blinds fabric  
5000meter/ctn, 500meter/roll



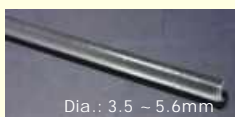
**RB-Tool**  
Roller tool, Use for  
installing hold down  
strip  
1pc/bag



**PVC-S7  
PVC-S8  
PVC-S10  
PVC-S12  
PVC-S13  
PVC-S15**  
PVC hard Slat ,  
Wide:7-15mm  
for Fabric Insert into Alum.  
Rail , with/without adhesive  
tape , White  
1000meter/ctn, 100meter/roll



**RBTL-1961**  
Roller tool, Use for  
pushing  
1pc/bag



**PVC-T3.5  
PVC-T4.5  
PVC-T5  
PVC-T5.6**  
PVC hard Tube,  
Dia.: 3.5-5.6mm,  
400pcs/ctn, 3meter/pc



**RBTL-1962-6**  
Roller tool, Use for  
installing hold down  
strip 6mm pet tape  
1pc/bag

**RBTL-1963-7**  
Roller tool, Use for  
installing hold down  
strip 7mm pet tape  
1pc/bag